



AN1019 - How to use the PROXIMITY encoding system with several sites

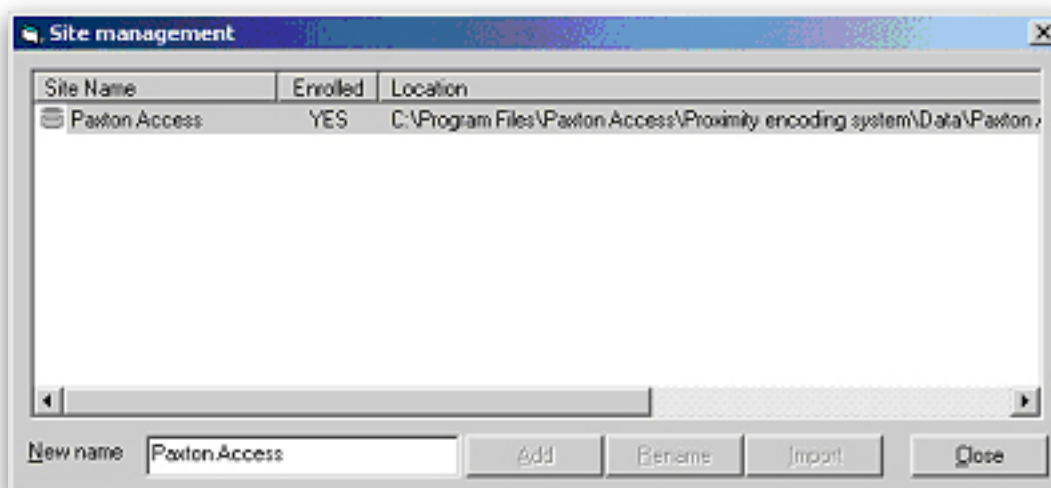
The PROXIMITY encoding system now offers users the opportunity to encode proximity tokens for more than one site using different site codes. The software manages this by listing each of the sites separately in a window called "Site Management" and holding each site's database in a separate, named, folder within the Program files. Each site is set up in exactly the same way as for a single site, so a separate Enrolment card+ is required to initialise each site and define its site code.

Operating the system in this way enables users to program cards for more than one location from unencoded, cost effective, blank tokens.

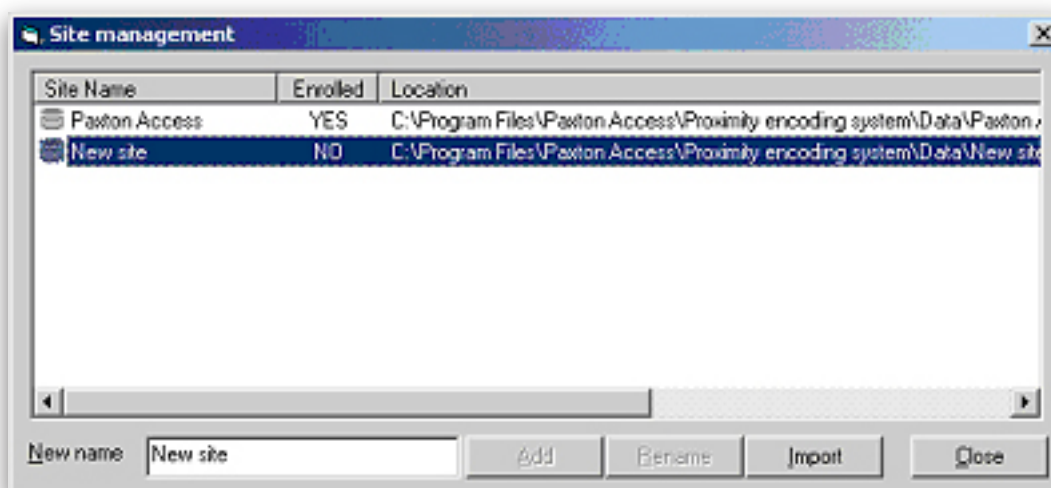
Note that an Enrolment card + must be purchased for each new site. The PROXIMITY encoding system software will not allow two sites to be enrolled using the same Enrolment card+.

Setting up a new site

In the software go to Tools\sites and the following window will appear.

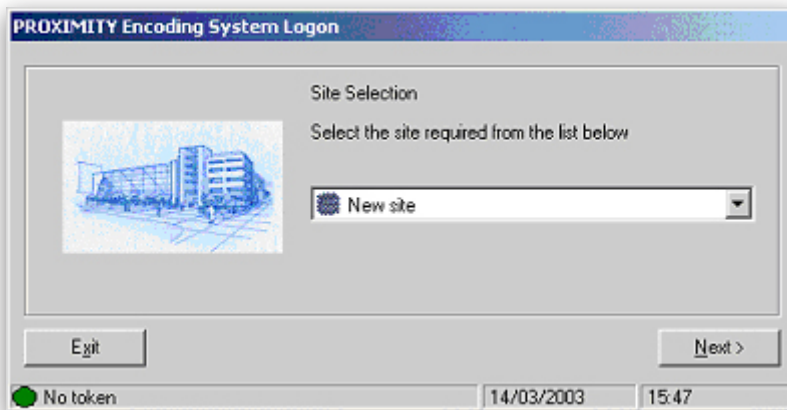


Type the name of the new site in the New name box and click Add. The new site will appear in the list, un-enrolled. This means that no site code has yet been assigned to the new site, the database has been created but it cannot be used until the site has been enrolled.

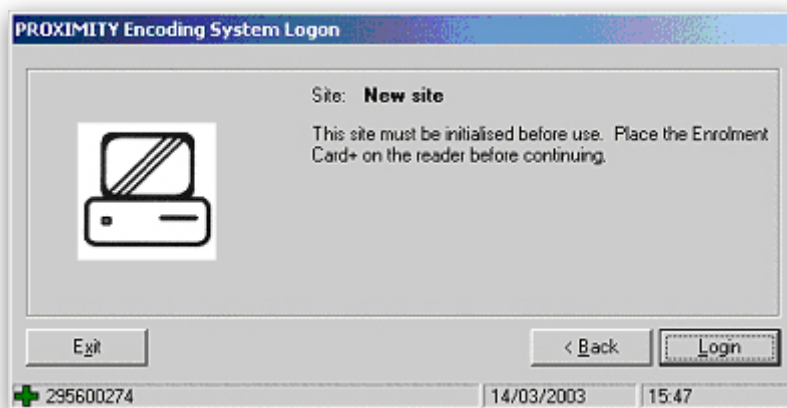


Enrolling a new site

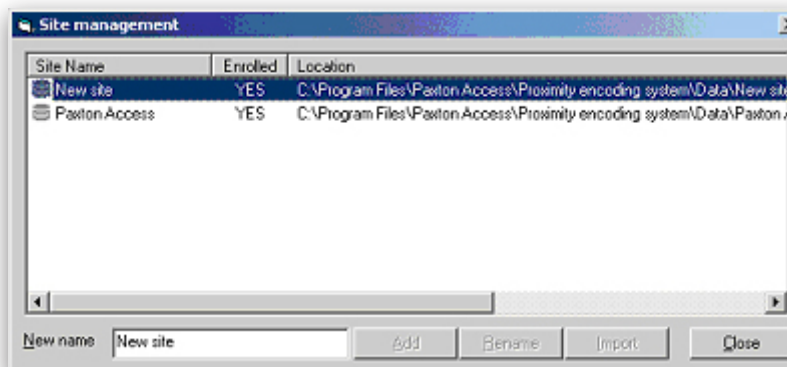
To enrol the site restart the software, select the new site from the drop down list and click "Next".



Present the new Enrolment card+ to the desktop reader and click "Login".



The software will be launched using the new database; any tokens enrolled whilst logged in to this site will be encoded with the new site code.



If the "Site management" window is now viewed the new site will be shown as enrolled.

Managing multiple sites

It is important when managing multiple sites in this way that the cards from different sites are not mixed up. When cards are lost or stolen, shadow cards must be produced and distributed to each site where the lost card was valid. With central distribution of cards it is far easier to compromise security with poor card management than if the cards are distributed locally.